



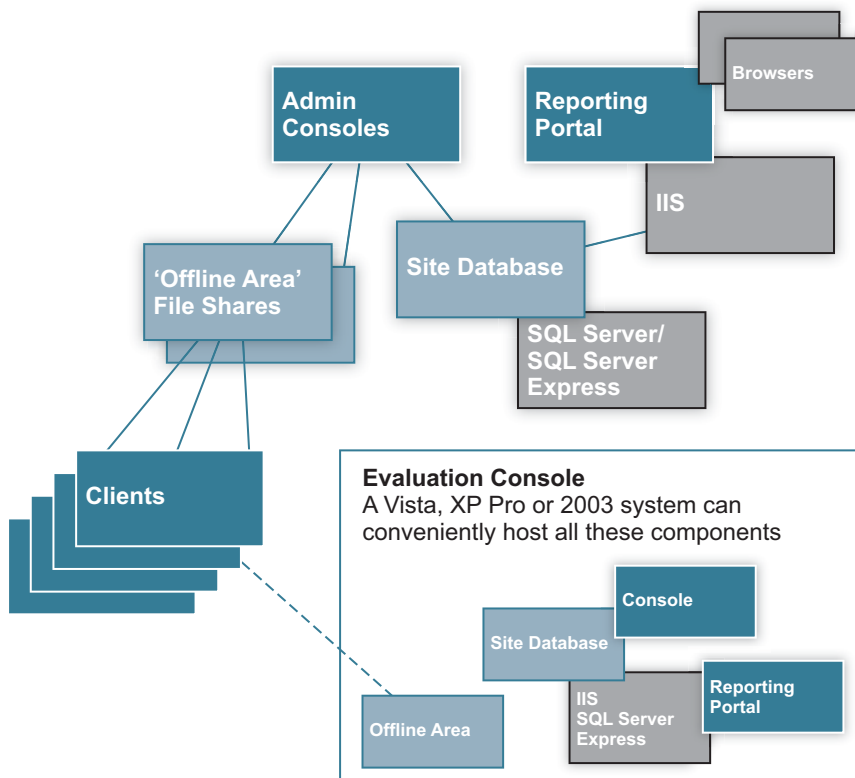
Getting Started with Asset Manager Pro v5.5

The 5-Click Quick-Start Process

These notes illustrate the simple process of initializing your Vector Asset Management evaluation Console. The default configuration options will enable you to proceed rapidly to deploying the combined Inventory and Software Usage Monitoring ('Metering') agent to up to 20 PCs, and collecting and viewing the inventory data for the PCs and related network devices. Vector's Classic Software Distribution is also available in the evaluation installation.

AM Pro Architecture and Components

- 1) **Consoles** are where administrators access the system through the Windows based Console application.
- 2) The **Portal** provides Web access to drill-down reporting and analysis.
- 3) The **Site Database** – normally held on a SQL Server.
- 4) **Offline Areas** are file shares used by Consoles and Clients as intermediate data repositories.
- 5) The **Client** agent software is normally installed on each managed PC. It can also be deployed transiently for 'one-shot' inventory.



System Requirements:

AM Pro Client

The Client requires Vista, Windows Server 2003, XP, Windows 2000, ME or '98.

System Requirements:

AM Pro Evaluation Console

The Console requires Vista, Windows XP Pro or 2003. The Console creates an evaluation database and automatically creates an Offline Area file-share for evaluation. The default evaluation settings of the 5-click installation process can be modified in the New Site Wizard – see overleaf.

Installing the Console

Simply adopt the defaults in the Install process.

The installer will ask you to define a Vector Administrator account. Ensure this account has the Admin privileges defined in the installer dialog. (It will be used first for the automated deployment of the Client.)

At the final stage, select to run the Console.

Getting Started with AM Pro

The Console's New Site Wizard

The Wizard provides a family of functions for creating, copying and migrating Site Databases, for creating the Offline Area shares, and for testing connectivity between these main components. It also creates pre-configured Client kits for automatic deployment once the Site Database itself is ready for use.

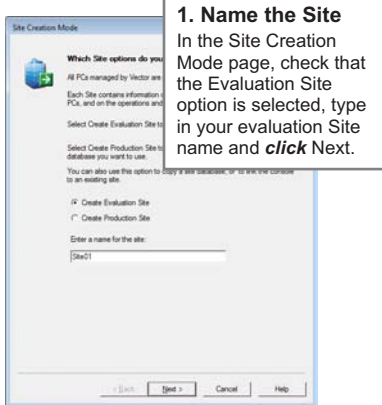
Initializing the Console

When the Console opens it will recognize that there are no Site Databases created, and will run the **New Site Wizard**. The Wizard will take care of these tasks:

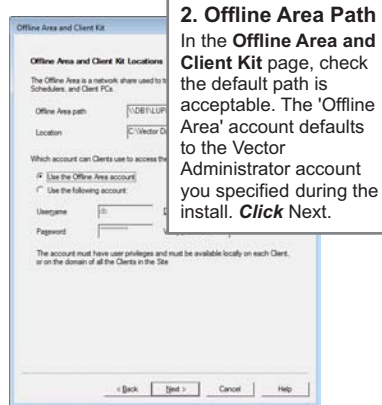
- Creating a Site Database.
- Creating an Offline Area file share.
- Building a Client Kit configured with the Offline Area file share details.
- Requesting a selection of PCs to be evaluation Clients, and an IP subnet for device discovery.
- Deploying the Client to the selected PCs.
- Initializing the Inventory scan jobs to process data from the evaluation Clients.

5-Click Quick-Start

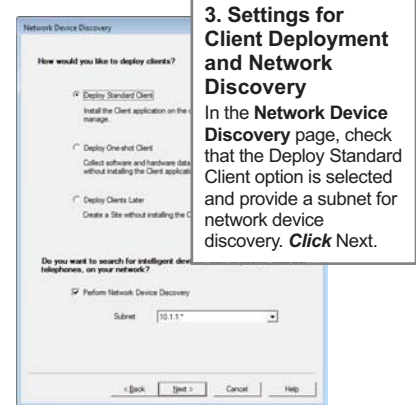
Taking the default route through the Wizard will enable you to reach your first PC inventories with about five mouse clicks, plus selection of your evaluation PCs and selection of an IP subnet for network device discovery.



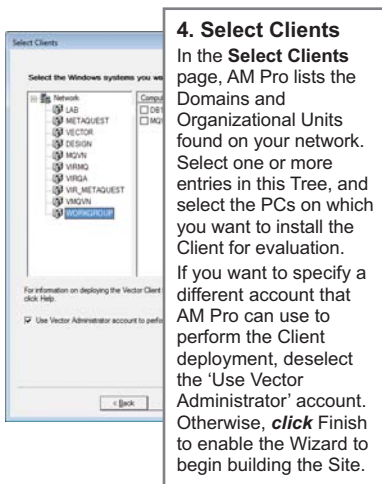
1. Name the Site
In the Site Creation Mode page, check that the Evaluation Site option is selected, type in your evaluation Site name and **click** Next.



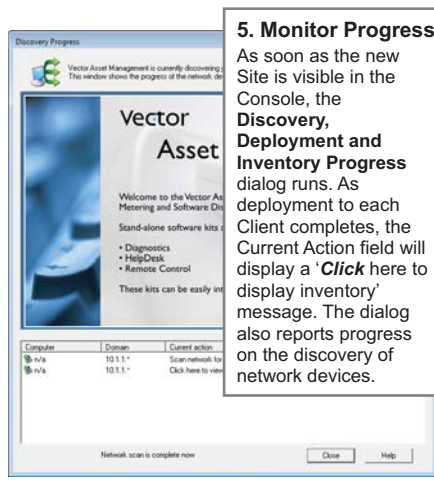
2. Offline Area Path
In the **Offline Area and Client Kit** page, check the default path is acceptable. The 'Offline Area' account defaults to the Vector Administrator account you specified during the install. **Click** Next.



3. Settings for Client Deployment and Network Discovery
In the **Network Device Discovery** page, check that the Deploy Standard Client option is selected and provide a subnet for network device discovery. **Click** Next.



4. Select Clients
In the **Select Clients** page, AM Pro lists the Domains and Organizational Units found on your network. Select one or more entries in this Tree, and select the PCs on which you want to install the Client for evaluation. If you want to specify a different account that AM Pro can use to perform the Client deployment, deselect the 'Use Vector Administrator' account. Otherwise, **click** Finish to enable the Wizard to begin building the Site.



5. Monitor Progress
As soon as the new Site is visible in the Console, the **Discovery, Deployment and Inventory Progress** dialog runs. As deployment to each Client completes, the Current Action field will display a **'click** here to display inventory' message. The dialog also reports progress on the discovery of network devices.

Now you are ready to explore the AM Pro Administrator's Console - see the main Evaluator's Guide. See also the companion Quick Start for the Web-based Reporting Portal.

Any questions? Need more help?
Phone Pillar Solutions on 070 - 4190502 or e-mail support@pillar-solutions.nl

In the Americas and Asia/Pacific
Vector Networks Inc
Atlanta, Georgia, USA
www.vector-networks.com
sales@vector-networks.com
Sales: 770 622 2850
Support: 800 330 5035

In Europe, the Middle East and Africa
Virtual Network Partners Ltd
Sheffield, South Yorkshire, UK
www.virtualnetworkpartners.eu
sales@virtualnetworkpartners.eu
Sales: +44 (0)203 004 0753
Support: 44 (0)203 004 0751

Your local supplier
Pillar Solutions BV
Leidschendam, The Netherlands
www.pillar-solutions.nl
sales@pillar-solutions.nl
Tel: +31 (0)70 4190502
Fax: +31 (0)70 4190503